

Around the World of Policies in 600 Seconds

Journées annuelles de santé publique
Montréal, November 22, 2016

François Benoit

Lead

National Collaborating Centre for Healthy
Public Policy



Centre de collaboration nationale
sur les politiques publiques et la santé
National Collaborating Centre
for Healthy Public Policy


*Institut national
de santé publique*
Québec 

Policies...




...Peripheral or central?





Laws are like sausages, it is better not to see them being made.

Quote attributed to Otto von Bismarck

A black pencil is positioned diagonally across the lower half of the image, resting on a piece of white paper with faint horizontal lines. The pencil's tip is on the left, and the quote is written in white text along its length. The background is a blurred, dark surface.

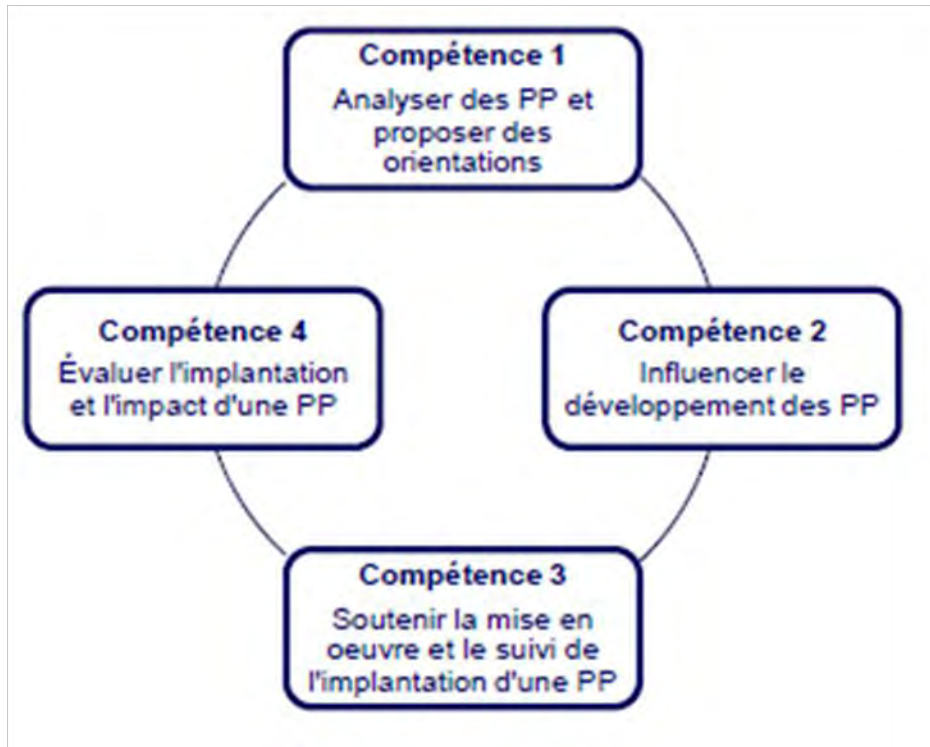
Politics is the art of the possible

Quote also attributed to Otto
Von Bismarck

Policies?

- Politics
- Policy
- Policies

What Roles Does Public Health Play?

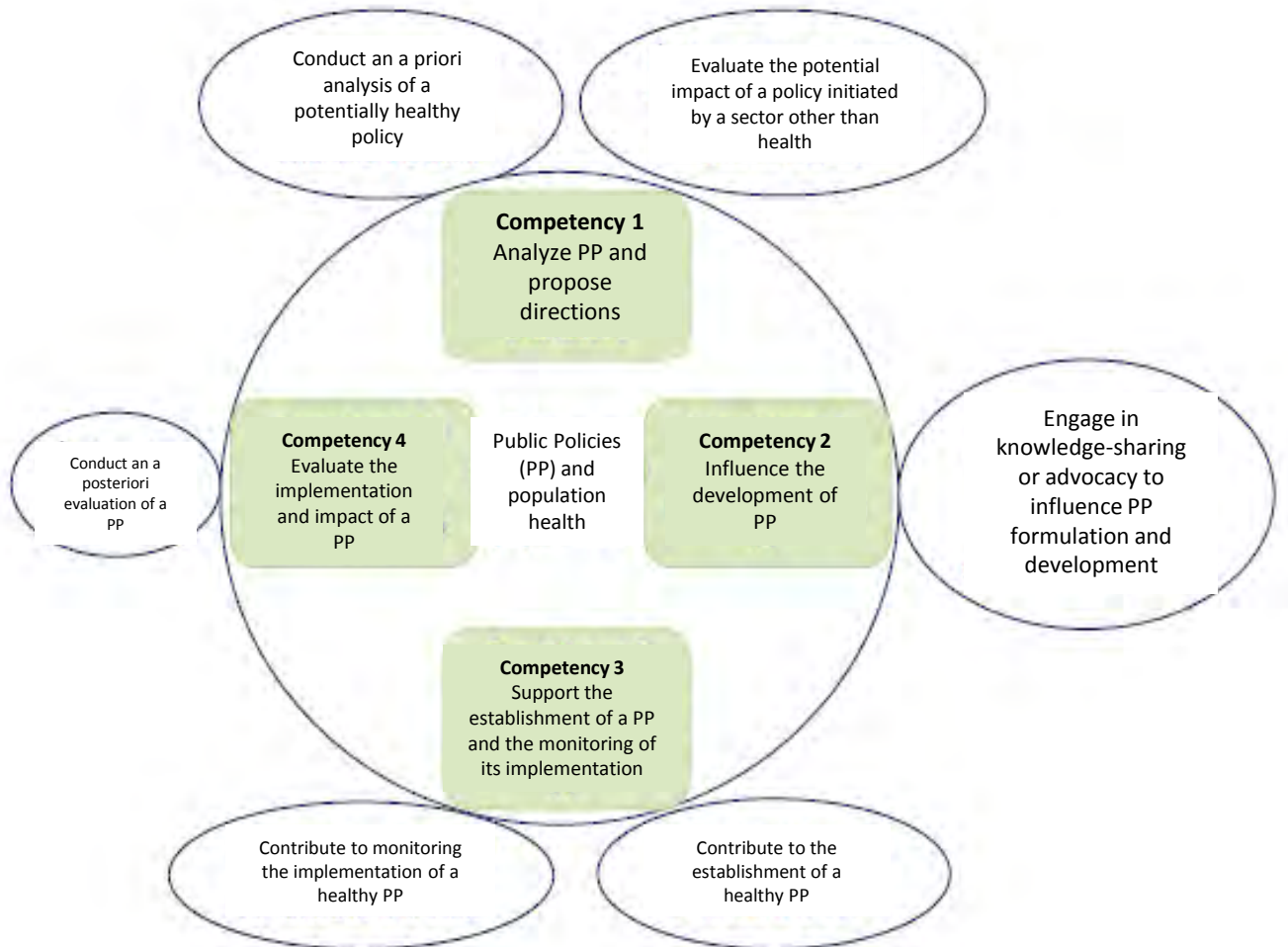


Centre de collaboration nationale
sur les politiques publiques et la santé

National Collaborating Centre
for Healthy Public Policy

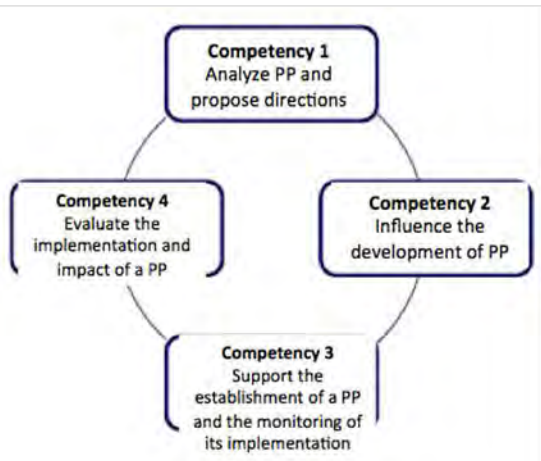
Institut national
de santé publique

Québec 

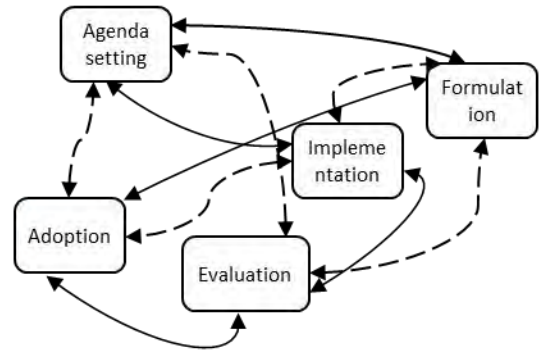


What Roles Does Public Health Play?

Actions/Evidence



Contribute to



The Influence of Public Health on Public Policies

1-ANSWERING EACH AND EVERY QUESTION.



Centre de collaboration nationale
sur les politiques publiques et la santé
National Collaborating Centre
for Healthy Public Policy

*Institut national
de santé publique*
Québec 

Different kinds of necessary knowledge

The seven kinds of knowledge necessary for public policy

- Knowing what the problem is
- Knowing what works
- Knowing how to put the solution into practice
- Knowing who to involve
- Knowing when to intervene
- Knowing where to allocate resources
- Knowing why human beings act as they do: symbolism, values, politics, ethics.

(Adapted from Ekblom 2011 and from Nutley, Walter and Davies 2007)





Analyze

Influence

Establish

Evaluate



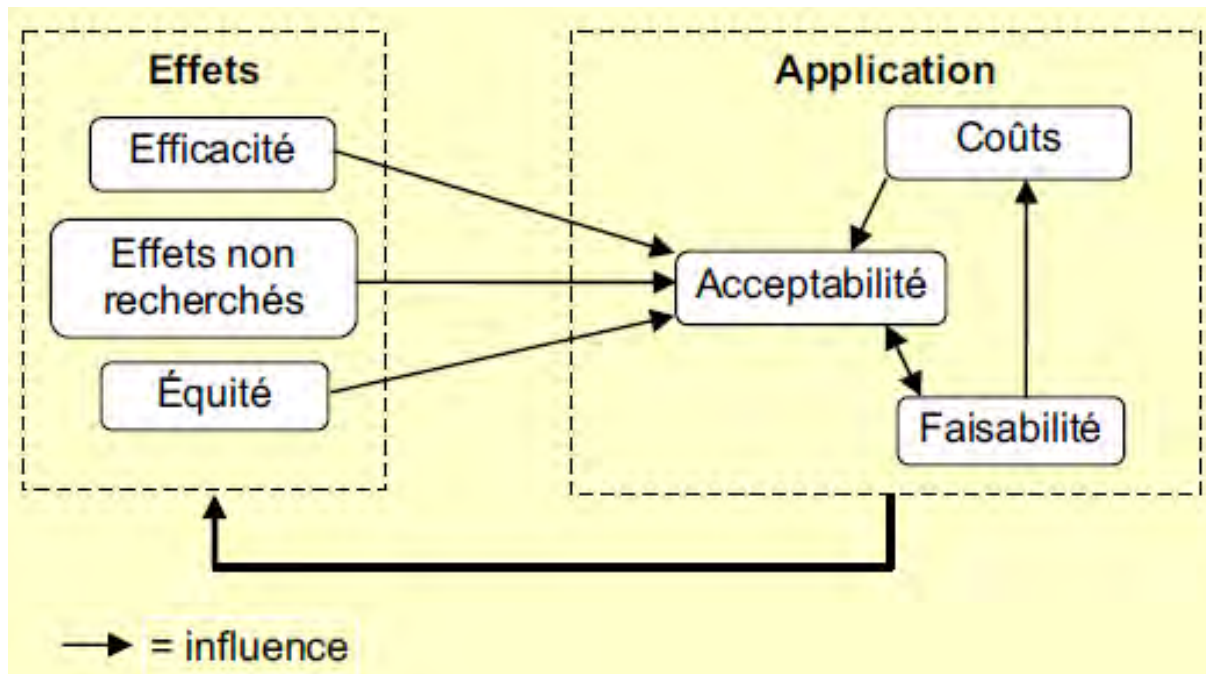
Centre de collaboration nationale
sur les politiques publiques et la santé

National Collaborating Centre
for Healthy Public Policy

Institut national
de santé publique

Québec 

Analyzing Policies



Evaluating the Health Impacts



2-TARGETING THE SOURCES OF INFORMATION



Centre de collaboration nationale
sur les politiques publiques et la santé
National Collaborating Centre
for Healthy Public Policy

*Institut national
de santé publique*
Québec 

Sources of knowledge about the determinants of health consulted by civil servants

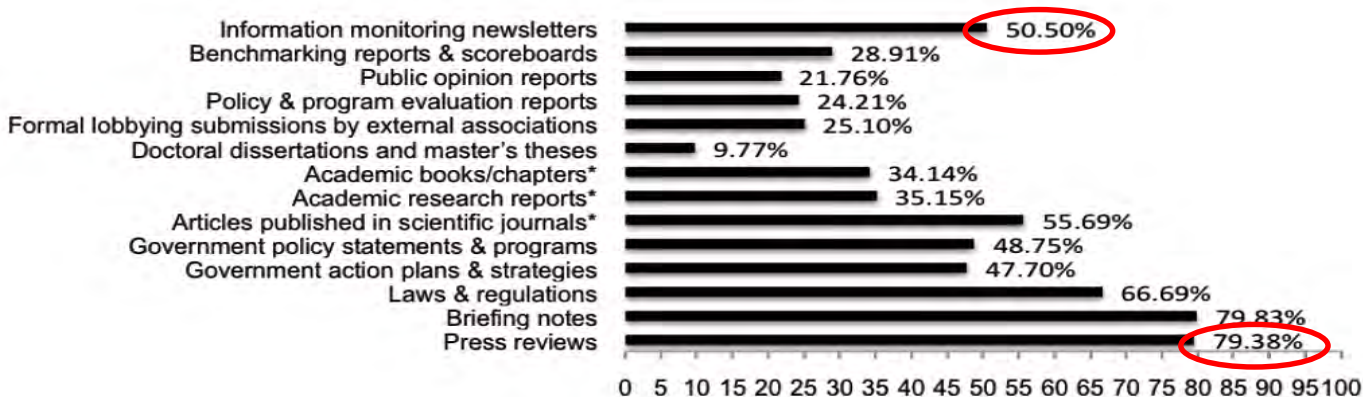
“Civil servants from departments of labor were particularly likely to cite the media as an important source of knowledge about the determinants of health.”



Source: Lavis, J. N., Ross, S. E., Stoddart, G. L., Hohenadel, J. M., McLeod, C. B., & Evans, R. G. (2003). Do Canadian civil servants care about the health of populations?. *American Journal of Public Health*, 93(4), 658-663.

Photo Credit: © Istock/malerapaso

Documents consulted by policy analysts (Ouimet et al., 2010)



Source: Ouimet, M., Bédard, P. O., Turgeon, J., Lavis, J. N., Gélinau, F., Gagnon, F., & Dallaire, C. (2010). Correlates of consulting research evidence among policy analysts in government ministries: a cross-sectional survey. *Evidence & Policy: A Journal of Research, Debate and Practice*, 6(4), 433-460.



3- DRAWING ON THE ANALYSIS OF POLICY PROCESSES



Centre de collaboration nationale
sur les politiques publiques et la santé

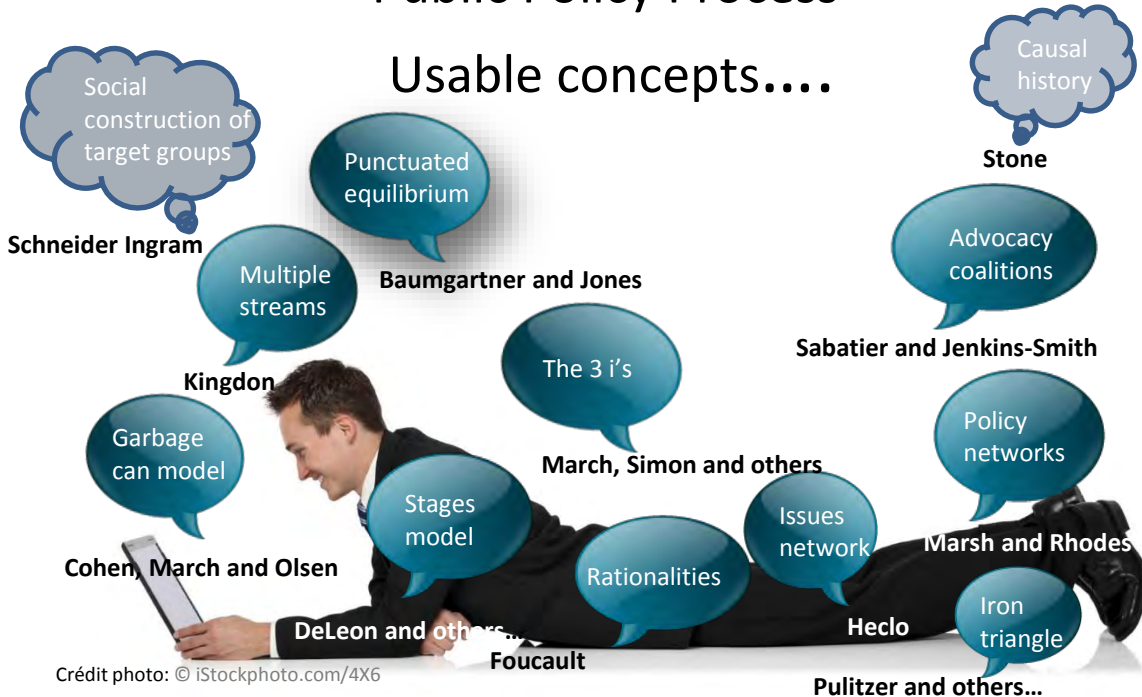
National Collaborating Centre
for Healthy Public Policy

*Institut national
de santé publique*

Québec 

Models and Concepts Public Policy Process

Usable concepts....



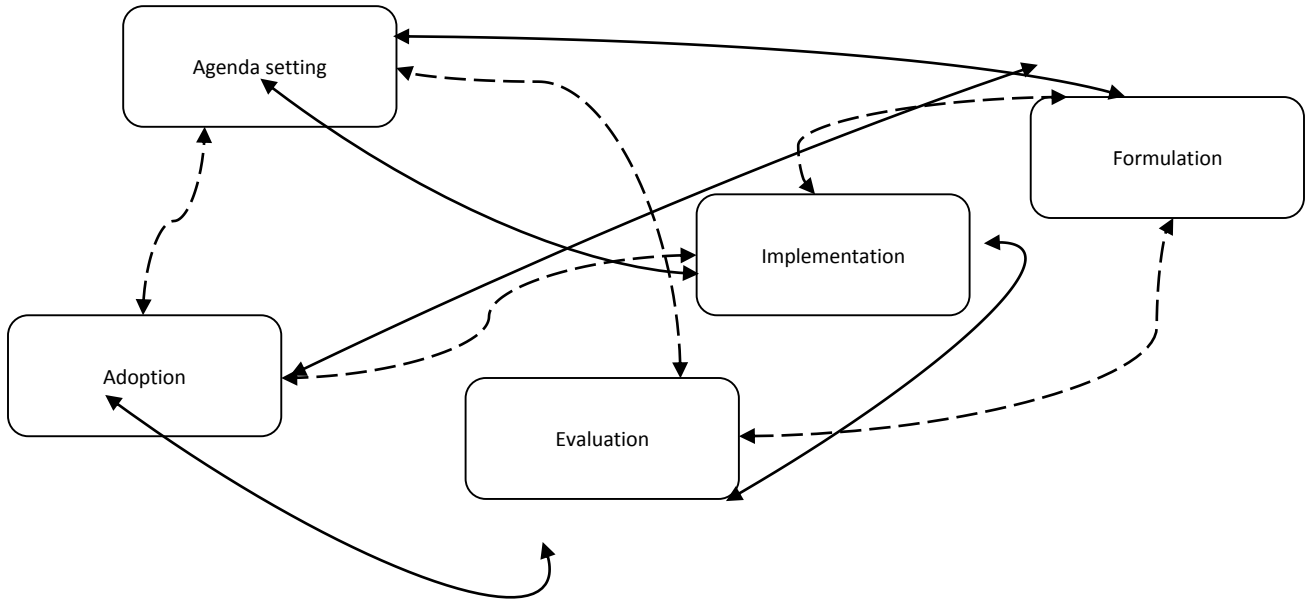
Crédit photo: © iStockphoto.com/4X6



Centre de collaboration nationale
sur les politiques publiques et la santé
National Collaborating Centre
for Healthy Public Policy



Different Stages/ Different Information



Changes are Slow...and Abrupt

Punctuated Equilibrium Model

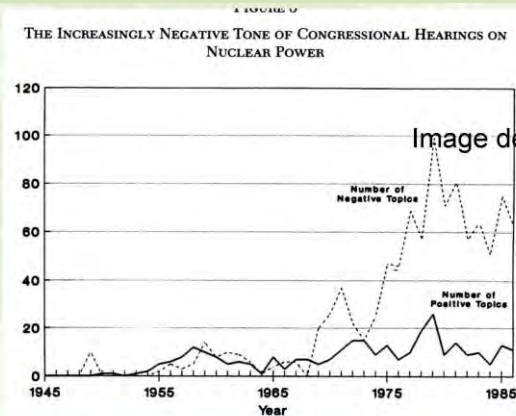


Image de la politique

Baumgartner, F. R., & Jones, B. D. (1991). Agenda dynamics and policy subsystems. *The Journal of Politics*, 53(04), 1044-1074.



Centre de collaboration nationale
sur les politiques publiques et la santé
National Collaborating Centre
for Healthy Public Policy

Institut national
de santé publique
Québec




The Opening of Windows




The Role of Policy Entrepreneurs and Coalitions





Laws are like sausages, it is better not to see them being made.

Attributed to Otto von Bismarck

A black pencil is positioned diagonally across a sheet of white, lined paper. The paper has faint, illegible handwriting in the background. The pencil is sharp and has a wooden eraser at the tip. The text "Politics is the art of the possible" is written in white, sans-serif font along the length of the pencil.

Politics is the art of the possible

Copyright-free images: <http://fr.freeimages.com>

Tools (#1545001): Ronit Geller

Image of man lying down: Photo credit: ©
iStockphoto.com/4X6



Centre de collaboration nationale
sur les politiques publiques et la santé
National Collaborating Centre
for Healthy Public Policy

*Institut national
de santé publique*
Québec 