

# L'Évaluation d'impact sur la santé

Un outil pour promouvoir les politiques publiques favorables à la santé

Atelier Pré-symposium

9 mars 2010

Winnipeg, Manitoba

Présentation par

Louise St-Pierre et Marie-Christine Ross



Centre de collaboration nationale  
sur les politiques publiques et la santé  
National Collaborating Centre  
for Healthy Public Policy

Institut national  
de santé publique  
Québec 

# Politiques publiques favorables à la santé

***Les politiques publiques favorables à la santé (PPFS) permettent une meilleure coordination des politiques dans plusieurs secteurs.***

***Les PPFS ont pour objectifs de réduire les inégalités et d'agir sur les facteurs qui influencent le bien-être.***



Story Tools: EMAIL | PRINT | Text Size: S M L XL | REPORT TYPO | SEND YOUR FEEDBACK | SHARE

# Rabaska liquid gas a go: Quebec

Last Updated: Thursday, October 25, 2007 | 10:41 AM ET  
CBC News

Opponents of a liquid natural gas terminal in Lévis, Que., say they'll use their money to fight the project, despite the government's overwhelming support for the future energy project.

Quebec's natural resources minister, Claude Béchar, publicly endorsed the project, saying it is "the province's urgent need for alternate sources of energy."

The \$840 million liquid natural gas plant stirred concern among local environmentalists who say it will destroy valuable farmland, pose safety risks along the Saint-Lawrence River and pollute the picturesque Quebec City port.

The project will also create about 500 jobs and will supply half the province's electricity. "We took all of those things into consideration. And we believe this could be a good investment for the province of Quebec," he said on Wednesday.

Story Tools: EMAIL | PRINT | Text Size: S M L XL | REPORT TYPO | SEND YOUR FEEDBACK | SHARE

# Businesses turning to windmills for power

Last Updated: Friday, February 6, 2009 | 1:25 PM AT  
Comments 21 Recommend 23  
CBC News



Energy use at Trout River Industries has been growing. (CBC)

With electricity costs rising steadily, some businesses on P.E.I. have taken charge of their own power, installing wind turbines on their property.

Trout River Industries has for the last decade been manufacturing live bottom trailers in Coleman, near Summerside. It's a technology that allows truck operators to load and unload material much more easily than with a conventional dump truck. The company has been growing steadily, and now has 41 employees.

Owner Harvey Stewart found his payroll wasn't the only expense that was growing. His electricity bill was on the rise as well, and it reached the point where he felt he could do better off the grid. Two 50-megawatt turbines now power his entire plant.

# LOCAL

Winnipeg Free Press - PRINT EDITION

# Food banks among busiest in Canada

By: Geoff Kirbyson  
18/11/2009 1:00 AM | Comments: 2

PRINT | E-MAIL | REPORT ERROR

SPITE a diverse economy that has been largely insulated from recession, Manitoba has among the highest usage of food banks in the country, a new study has found.

Food Banks Canada, a national charity supporting the food bank community across Canada, said the number of people accessing food banks in Manitoba rose more than 18 per cent for the 12 months ending in March, 2009. That's the fourth-highest increase in the country, trailing only Alberta (1 per cent), Nova Scotia (20 per cent) and Ontario (19 per

Winnipeg Free Press - ONLINE EDITION

# Council rejects city-wide recycling contract

By: Bartley Kives  
24/02/2010 5:59 PM | Comments: 13

PRINT | E-MAIL | SHARE THIS | REPORT ERROR

WINNIPEG — City council has rejected a new city-wide recycling contract that would have seen 60-litre blue boxes replaced with 240-litre rolling carts this September.

In an unusual move, council voted 10-4 to defeat a 7.5-year, \$35 million recycling contract. A majority of council does not believe it will provide the city the flexibility to bring in a contract

strategy that includes organics, it seems to be doing to do," said public works chairman Bill Cl

modifications or augmentations to the garbage collection service provided by rolling carts.

Support of the recycling plan were Councillors Scott St. John, Gord Steeves (St. Vital) and Justin Swand

to defeat the contract. "I'm sure the ward councilors will do what's right for the city," he said.

The city's waste department to negotiate the extension of the recycling minimization plan is developed.

LICENSE | EMAIL | PRINT | Text Size: S M L XL | REPORT TYPO | SEND YOUR FEEDBACK | SHARE

# Loto-Québec to offer online gambling

Last Updated: Thursday, February 4, 2010 | 1:10 PM ET  
CBC News

Quebec's lottery corporation will launch its first online gambling service in September — a move Loto-Québec hopes will add millions of dollars to its coffers by 2013, the province's finance minister said Wednesday.

Allowing Loto-Québec to join the lucrative online market, beginning with poker and sports betting, could earn the province about \$50 million over the next three years, Finance Minister Raymond Bachand said. And he said he'd be happy if Loto-Québec could carve out an even larger segment of the estimated \$675-million online market than that.



Critics worry offering online gambling will be akin to a game of Russian roulette for gambling addicts.

# Plan

- 1) Définition de l'ÉIS
- 2) Fondements théoriques
- 3) L'ÉIS en pratique
- 4) Les 5 étapes de l'ÉIS



# La définition la plus utilisée

« une combinaison de procédures, méthodes et outils qui permettent de **juger les effets possibles d'une politique**, d'un programme ou projet **sur la santé de la population** et la **distribution de ces effets** au sein de la population »

*ECHP, WHO, 1999*



Centre de collaboration nationale  
sur les politiques publiques et la santé  
National Collaborating Centre  
for Healthy Public Policy

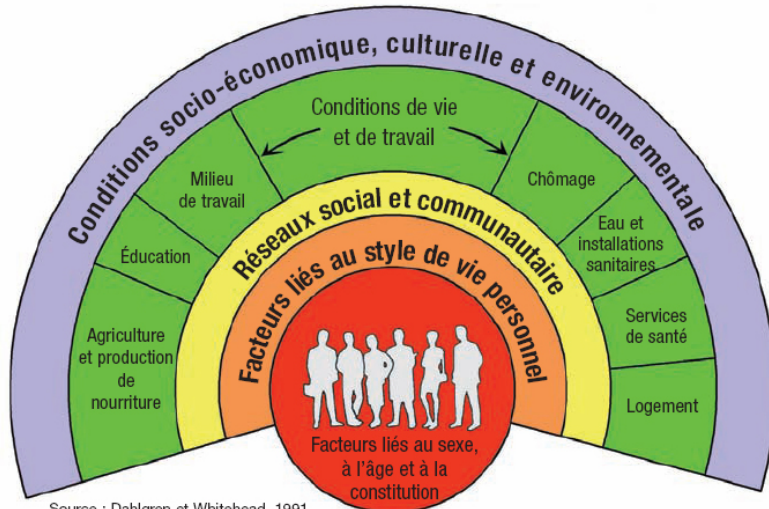
# Deux sources

- **Évaluation d'impact sur l'environnement (ÉIE)**
  - Rigueur méthodologique (science)
  - Prise en charge par les experts
- **Promotion de la santé**
  - Déterminants sociaux de la santé et équité (effets distributifs)
  - Participation citoyenne (*empowerment*)
  - Pour actualiser la stratégie de la Charte d'Ottawa : politiques publiques et environnements favorables à la santé



# Principes de base

Figure 1 – Cadre d'analyse des déterminants de la santé



Source : Dahlgren et Whitehead, 1991

Image : Infolettre Évaluation des pratiques de gestion et d'évaluation dans le domaine de la santé, vol3 no 2 octobre 2006 p. 10 consulté mars 2010 (<http://www.medsp.umontreal.ca/getos/pdf/Infopr102006.pdf>)

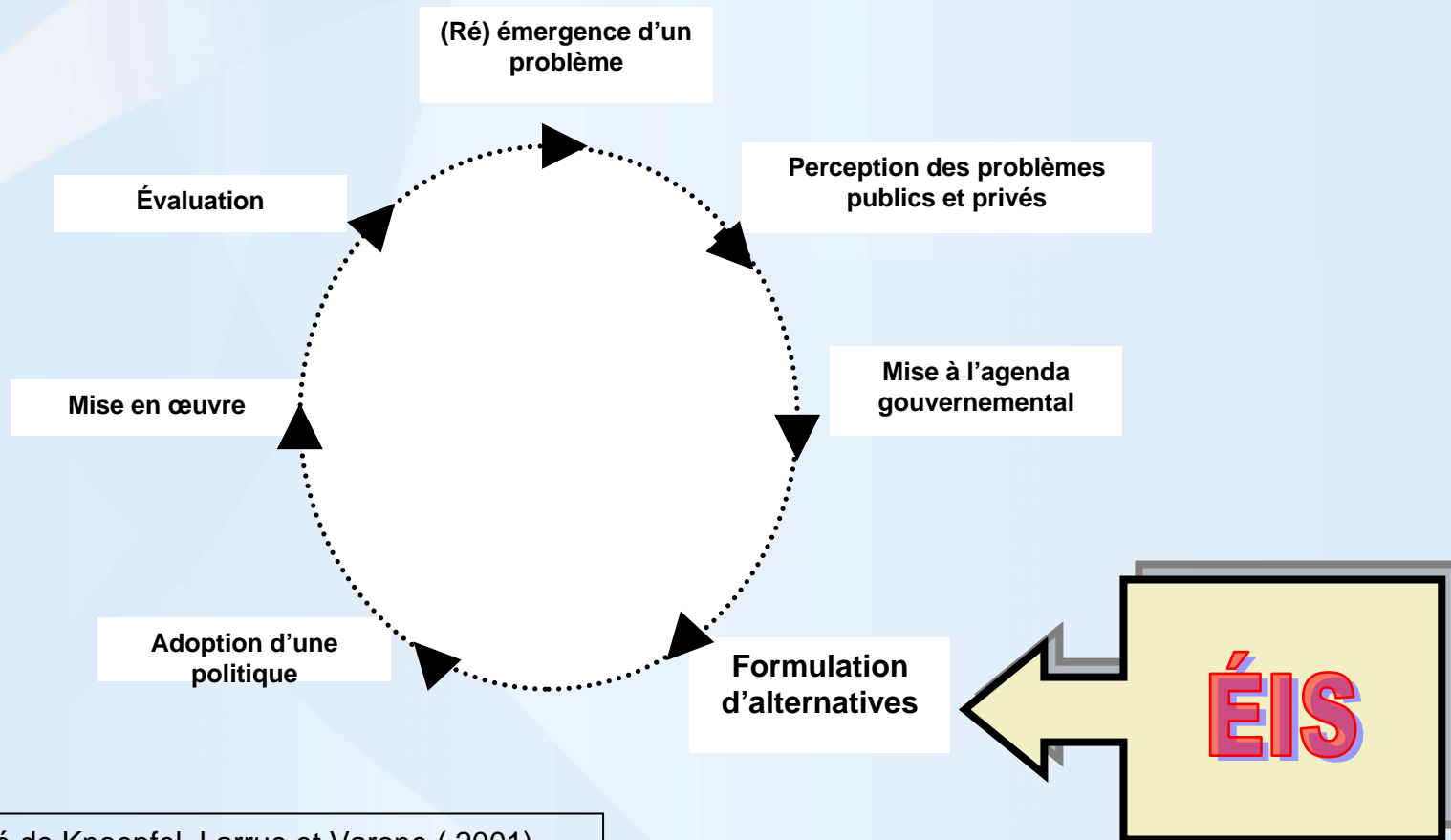
***Démocratie, développement durable, équité, participation, utilisation éthique des données probantes***  
(consensus de Göteborg)

- Réduction des inégalités sociales de santé
- Rigueur et neutralité de l'analyse
- Implication des parties prenantes et des décideurs
- Appui au processus de prise de décision
- Responsabilité collective au regard de la santé des populations



Centre de collaboration nationale  
sur les politiques publiques et la santé  
National Collaborating Centre  
for Healthy Public Policy

# L'ÉIS dans le développement d'une politique



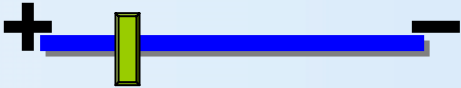
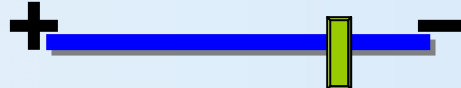

Adapté de Knoepfel, Larrue et Varone ( 2001)



Centre de collaboration nationale  
sur les politiques publiques et la santé  
National Collaborating Centre  
for Healthy Public Policy



# La pratique varie selon la finalité

Finalité	Focus	Utilisation de littérature scientifique
Production d'avis de santé publique	Approche scientifique	 <p>A horizontal blue line with a plus sign on the left and a minus sign on the right. A green vertical bar is positioned near the left end, indicating high use of scientific literature.</p>
Démocratie/ Renforcement du pouvoir d'agir	Participation citoyenne	 <p>A horizontal blue line with a plus sign on the left and a minus sign on the right. A green vertical bar is positioned in the middle, indicating moderate use of scientific literature.</p>
Sensibilisation des décideurs à l'extérieur du secteur de la santé	Échanges/ Dynamiques intersectorielles	 <p>A horizontal blue line with a plus sign on the left and a minus sign on the right. A green vertical bar is positioned in the middle, indicating moderate use of scientific literature.</p>



# La pratique dans le monde



Health Impact Assessment  
Toolkit for Cities

Document 1

Background document: concepts, process

Vision to Action



ACHEIA

Equity-Focused  
Health Impact Assessment  
Framework

Australasian Collaboration for Health Equity Impact Assessment

A guide to  
health impact assessments

Focusing on social and environmental sustainability

SWEDISH NATIONAL INSTITUTE OF PUBLIC HEALTH

www.fhi.se



Health impacts –  
A strategy across  
Government



European  
Observatory  
on Health Systems and  
Policies

The Effectiveness of  
Health Impact Assessment

Scope and limitations of supporting  
decision-making in Europe

The  
Merseyside  
Guidelines for  
Health Impact Assessment

Edited by  
Matthias Wismar  
Julia Blau  
Kelly Ernst  
Josep Figueras



DECEMBER 2006

# Les étapes de l'ÉIS



**1. DÉPISTAGE**

**2. CADRAGE**

**3. ANALYSE**

**4. RAPPORT/RECOMMANDATIONS**

**5. ÉVALUATION**



# Dépistage

## Annexe A Grille de dépistage Processus d'évaluation d'impact sur la santé -

Ministère  
 Responsable du dossier :  
 Titre et numéro du projet de loi ou de règlement :

Déterminants de la santé*	Impact du projet de loi ou de règlement sur les déterminants de l'état de santé						Commentaires
	Très positif	Plutôt positif	Neutre	Plutôt négatif	Très négatif	N/A**	
Habitudes de vie et comportements	Saine alimentation						
	Non-tabagisme						
	Consommation modérée d'alcool						
	Pratique de l'activité physique						
Environnement social	Qualité du milieu de vie (ex.: famille, école, travail, services de garde, résidences pour personnes âgées)						
	Participation à la communauté						
	Élimination de la discrimination						
	Intégration sociale						
	Soutien à la poursuite des études						
Environnement physique	Qualité de l'eau, de l'air et du sol						
	Disposition sécuritaire des déchets dangereux						
	Sécurité des aménagements physiques						
	Sécurité (accès et qualité) des						

- Préciser la mesure de règlement à l'origine
- Décrire très brièvement
- Indiquer les groupes d'être touchés (enfants, etc.)

# Cadrage



**Table 2: Scoping Checklist – choosing the appropriate level of HIA**

Question	Response to question	Guidance on the appropriate level of tool	More/less comprehensive
Is the magnitude of the proposed policy change significant?		The greater the magnitude of the policy shift, the more comprehensive the tool should be	
Are there significant potential health impacts of the policy change?		The greater the significance of potential health impacts, and the higher the degree of uncertainty, the more comprehensive the tool should be	
How urgent is the need for policy change?		If there is relatively high urgency then select a less comprehensive tool	
Is the timing critical in relation to other policies/issues?		If timing is critically linked to other policy developments and timeframes are short, select a less comprehensive tool	
What is the level of political interest?		The higher the level of political interest, the more comprehensive the tool should be	
Are there other political considerations?		The more politically complex the policy change is, the more comprehensive the tool should be	
What is the level of public interest?		The higher the level of public interest in the policy change, the more comprehensive the tool should be	
Is there a 'window of opportunity' for the work?		Consider if there is a window of opportunity (ie, timeliness, currency, political support). If the window is likely to close, select the less comprehensive tool	
What level of staff resource is available?		The higher the resource level, the more comprehensive the tool should be	



**Analyse**



# Recommendations

## Rapport



# Évaluation





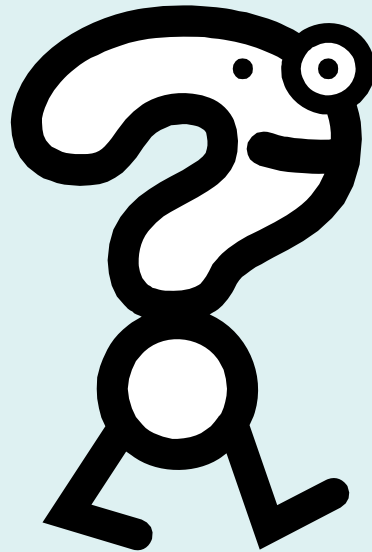


**Nos choix sont influencés par les choix qui nous sont disponibles.**

**Aidez à faire en sorte que les meilleurs choix pour la santé soient des choix accessibles à tous.**

(traduction libre, site *Health in Common*)

**Questions?**



# L'ÉIS dans la pratique...quelques suggestions de ressources

- Associations d'observatoires en santé publique-HIA Gateway:  
[http://www.apho.org.uk/default.aspx?QN=P\\_HIA](http://www.apho.org.uk/default.aspx?QN=P_HIA)
- HIA connect (CHETRE-Centre for health equity training, research and evaluation):  
<http://www.hiaconnect.edu.au/>
- Le site du Centre de collaboration nationale sur les politiques publiques et la santé (CNPPS), section ÉIS :  
<http://www.ccnpps.ca/600/evaluation+d'impact+sur+la+sante.htm>
- Le Portail politiques publiques <http://politiquespubliques.inspq.qc.ca/fr/index.html>
- Le répertoire des guides et outils en ÉIS du CCNPPS:  
<http://www.ccnpps.ca/docs/ÉISGuidesOutilsFr2008A.pdf>
- Organisation mondiale de la santé (OMS)- Section ÉIS (en anglais) :  
<http://www.who.int/hia/en/>
- Plateforme suisse : <http://www.impactsante.ch/spip/>