
Screening

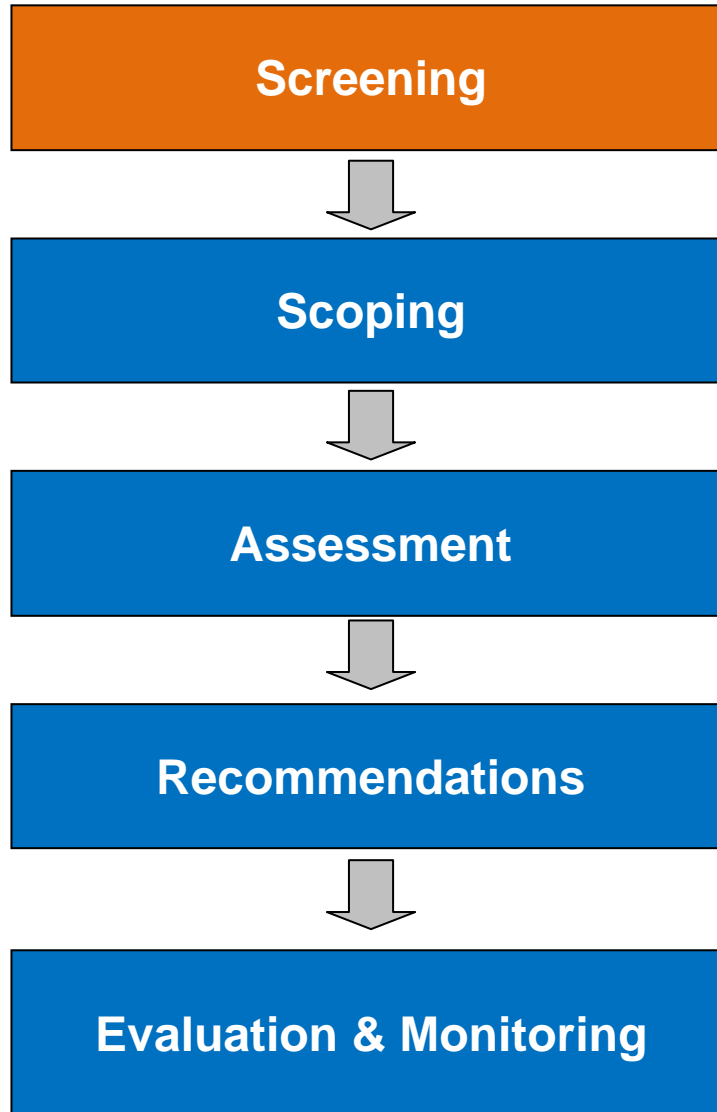


Centre de collaboration nationale
sur les politiques publiques et la santé

National Collaborating Centre
for Healthy Public Policy

***Institut national
de santé publique***

Québec 





Centre de collaboration nationale
sur les politiques publiques et la santé
National Collaborating Centre
for Healthy Public Policy

Institut national
de santé publique
Québec

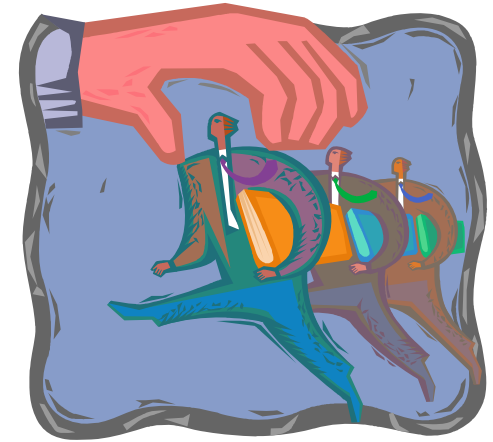


Why screen?



Screening criteria

- Influence decision making
- Resources
- Health outcomes
- Differential impacts
- Additional value



Screening tools



Centre de collaboration nationale
sur les politiques publiques et la santé
National Collaborating Centre
for Healthy Public Policy

*Institut national
de santé publique*
Québec 

Health Impact Assessment Screening Checklist

<p>Decision scenario under consideration</p>	
<p>Screening Question</p>	<p>Response and Supporting Facts or Rationale</p>
<p><i>Does the decision have the potential to affect, positively or negatively, population health or health inequities? In what ways? What are the most important health concerns that could be addressed by a HIA?</i></p>	
<p><i>Are there decision alternatives that are more or less advantageous to population health?</i></p>	
<p><i>Who are the stakeholders and interest groups involved in the decision-making process? Do they seem to have the interest and capacity to participate in an HIA? Would stakeholders use the HIA to inform or influence the decision-making process? Are there additional stakeholders that should be involved in an HIA?</i></p>	



HIA Screening/Scoping Checklist (UCLA)

HIA Screening Checklist of Health Determinants (UCLA Health Impact Assessment Project, April 2002)	Potentially <i>significant</i> impact					
	<u>Likelihood</u> of impact?			Likely <u>magnitude</u> of impact?		
	(1) no/unlikely	(2) possible	(3) likely	(1) low	(2) medium	(3) high
Biophysical environment						
Housing conditions						
Fire, building safety	1	2	3	1	2	3
Security	1	2	3	1	2	3
Sanitation	1	2	3	1	2	3
Indoor air quality (including radon)	1	2	3	1	2	3
Asbestos	1	2	3	1	2	3
Lead	1	2	3	1	2	3
Crowding	1	2	3	1	2	3
Affordability and access	1	2	3	1	2	3
Working conditions (includes psychosocial factors¹)						
Structural safety (including fire, earthquake, etc)	1	2	3	1	2	3
Air quality	1	2	3	1	2	3
Toxins, biohazards	1	2	3	1	2	3
Work task safety	1	2	3	1	2	3
Ergonomics	1	2	3	1	2	3
Psychosocial (including stress)	1	2	3	1	2	3
School conditions (see Services – Education ²)	N/A			N/A		
Water quality						
Drinking water quality	1	2	3	1	2	3

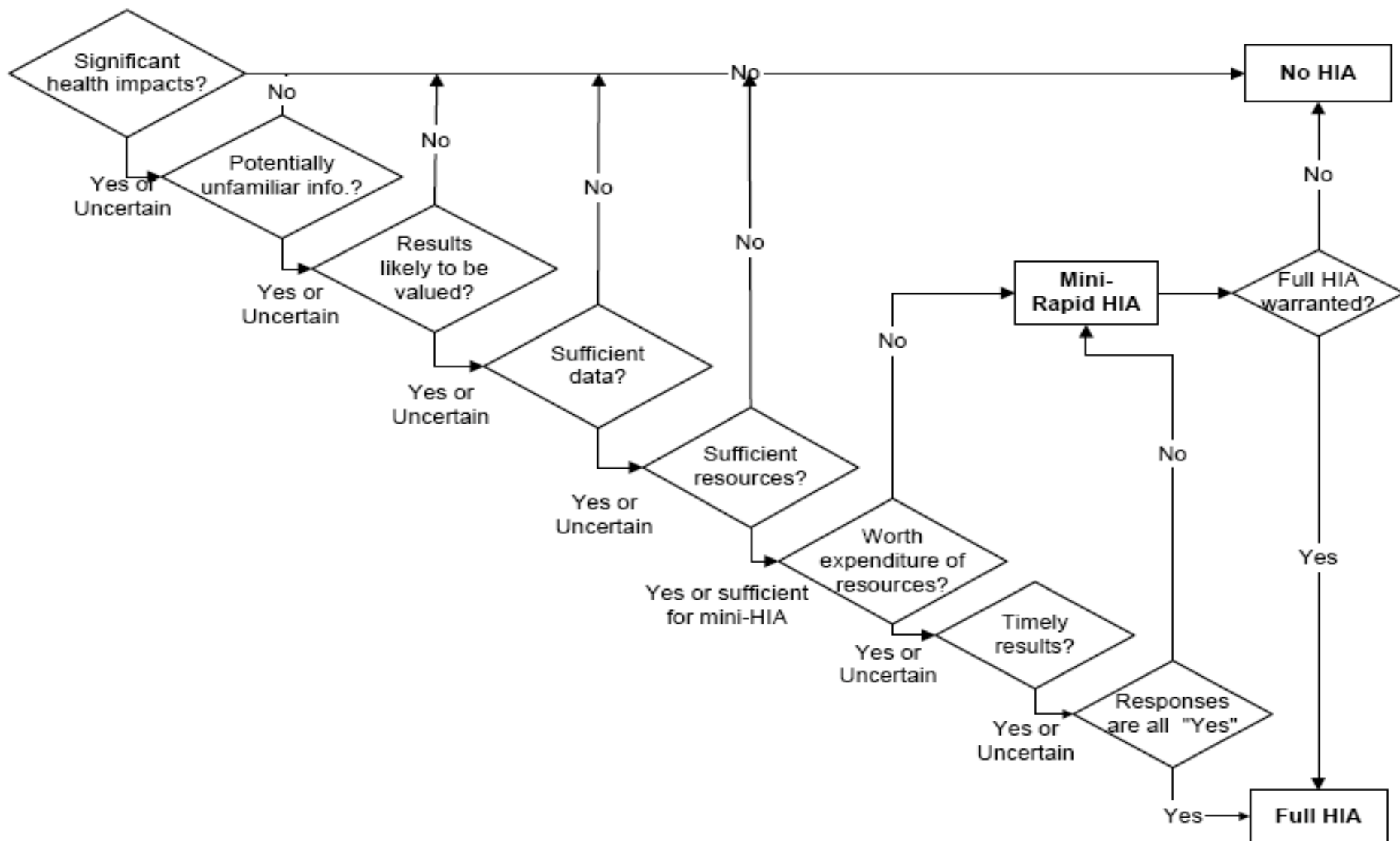


Checklist of potential health impacts

Bias towards HIA	To your knowledge:	Bias against HIA
Yes	Are sufficient resources available to conduct the HIA?	No
Yes / don't know	Are the potential -ve health impacts associated with the activity likely to be serious?	No
Yes / don't know	Are the potential -ve health impacts likely to be serious if the activity doesn't proceed?	No
No	Is the activity of relatively short duration?	Yes
Yes	Is there scope to act on the recommendations of the HIA?	No
Yes / don't know	Are the potential -ve health impacts likely to be greater for vulnerable, marginalised or disadvantaged groups?	No
Yes / don't know	Are there community concerns about potential health impacts?	No
Yes	Is there an evidence base to support appraisal of the impacts?	No*
Yes	Is the activity important in the context of corporate & environmental service priorities?	No



Screening algorithm to guide decisions on whether to conduct an HIA



Screening outcomes

Short summary document:

- Policy description
- Potential health impacts
- Opportunities to affect decision makers
- Recommendations



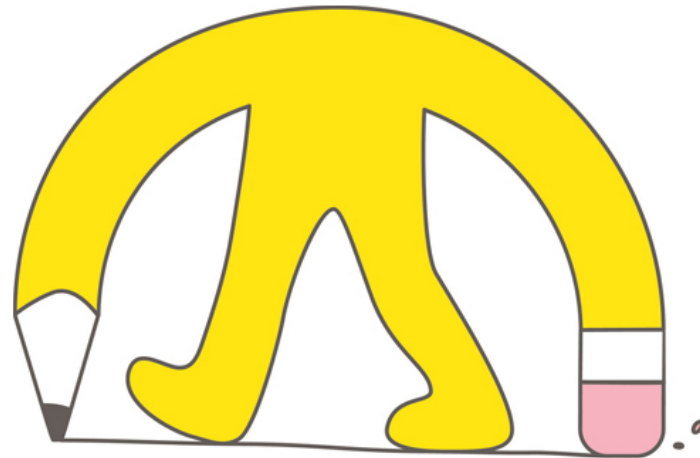
Who should you involve?

It depends...



Common Mistakes

- Too much time
- Over-weighting resources
- Not using recommendations



Screening exercise

Purpose: To gain experience using screening tools and gain a better understanding of the screening process

Task: In your groups, screen the 5 scenarios provided using the screening tool. Select **1 or 2** scenarios that would be most appropriate for HIA.

Be prepared to:

1. Tell the larger group which projects you selected
2. Justify your choice

Time allotted: 30 minutes



Tendency to do an HIA	To your knowledge:	Tendency not to do an HIA
Yes	Is there sufficient information on the policy/project to be able to assess the health impacts?	No
Yes	Are there potential positive and/or negative health impacts of the policy/project to be assessed that need further investigation?	No
Yes	Is there reason to suspect that health issues not considered in the planning process of this policy/project might become more visible by doing a HIA?	No
Yes	Is there potential to influence the decision-making process?	No
High	What is the likelihood that the health impacts of this policy/project might be more pronounced for disadvantaged groups (e.g. low income, elderly, disabled)?	Low
High	Positive health impacts Negative health impacts	Low
Yes	Are sufficient resources available to conduct the HIA?	No



Screening exercise

Purpose: To gain experience using screening tools and gain a better understanding of the screening process

Task: In your groups, screen the 5 scenarios provided using the screening tool. Select **1 or 2** scenarios that would be most appropriate for HIA.

Be prepared to:

1. Tell the larger group which projects you selected
2. Justify your choice

Time allotted: 30 minutes

