



Situating Health Impact Assessment (HIA):

From environmental
assessment to
social determinant
frameworks;
From projects to policies



Centre de collaboration nationale
sur les politiques publiques et la santé
National Collaborating Centre
for Healthy Public Policy

*Institut national
de santé publique*
Québec 



NATIONAL COLLABORATING CENTRE
FOR ABORIGINAL HEALTH
CENTRE DE COLLABORATION NATIONALE
DE LA SANTÉ AUTOCHTONE



Health & Well-being

Education
Social Inclusion
Culture
Language
Inclusion
Income
Employment
Early Childhood Development
Housing
Food Security

Health Impact Assessment (HIA)

“[A] combination of **procedures, methods and tools** by which a policy, a program or project may be judged as to its **potential effects** on the health of a population and the **distribution of effects** within the population”.

(European Centre for Health Policy (ECHP). (1999). Health Impact Assessment: Main concepts and suggested approach. Gothenburg consensus paper. Brussels: WHO-Regional Office for Europe. Retrieved from:

http://www.hiaconnect.edu.au/files/Gothenburg_Consensus_Paper.pdf)

HIA

- Policies,
- Programs,
- Projects

that are not intended to impact health but that have the potential to have negative AND/OR positive effects on health and health equity.

What HIA is not

- An epidemiological study
- A subjective piece to prove a point
- A Human Health Risk Assessment
- A program evaluation

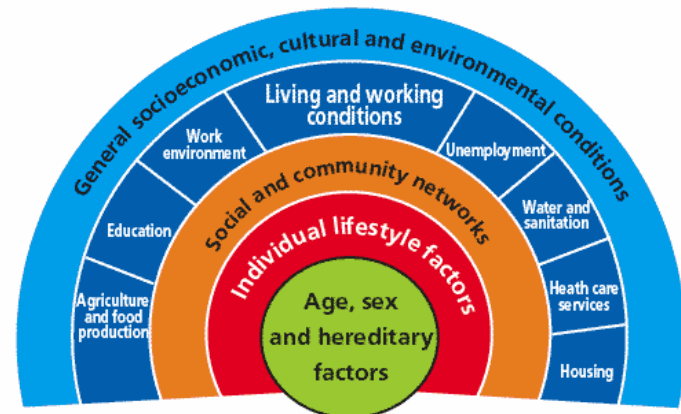
Roots of HIA

- **19th Century Public Health**
 - The effect of living and working conditions on health
- **Environmental Impact Assessment (EIA)**
 - Structured, five step process
 - Scientific study of the potential effect(s) of a project on the environment
 - Objective to provide solid evidence

Roots of HIA (continued)

- **Health promotion**

- Return to a holistic definition of health
- Healthy public policy
- Citizen participation

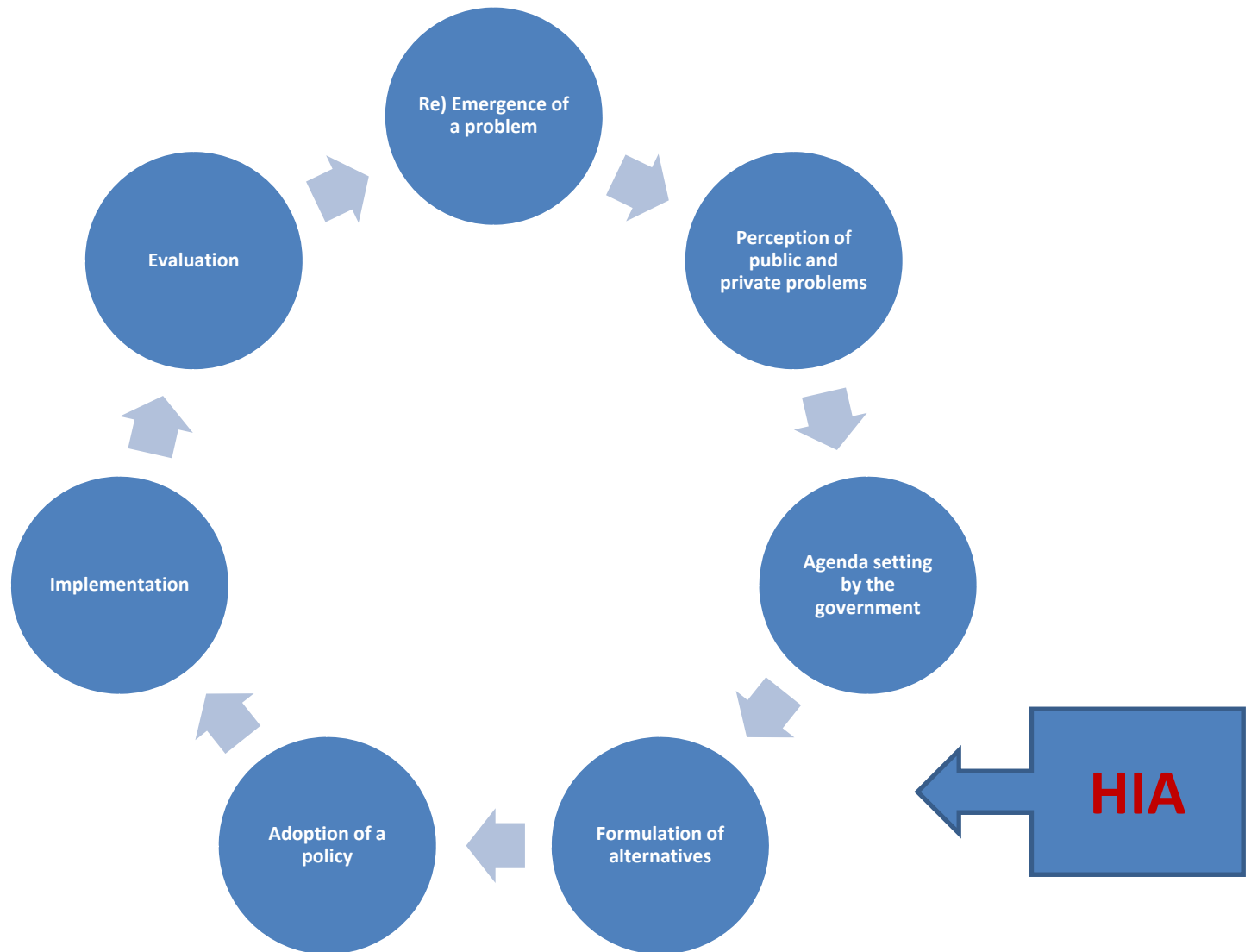


Source: Dahlgren, G. & Whitehead, M. (1991). *Policies and Strategies to Promote Social Equity in Health*. Stockholm: Institute for Future Studies.

- **Health equity**

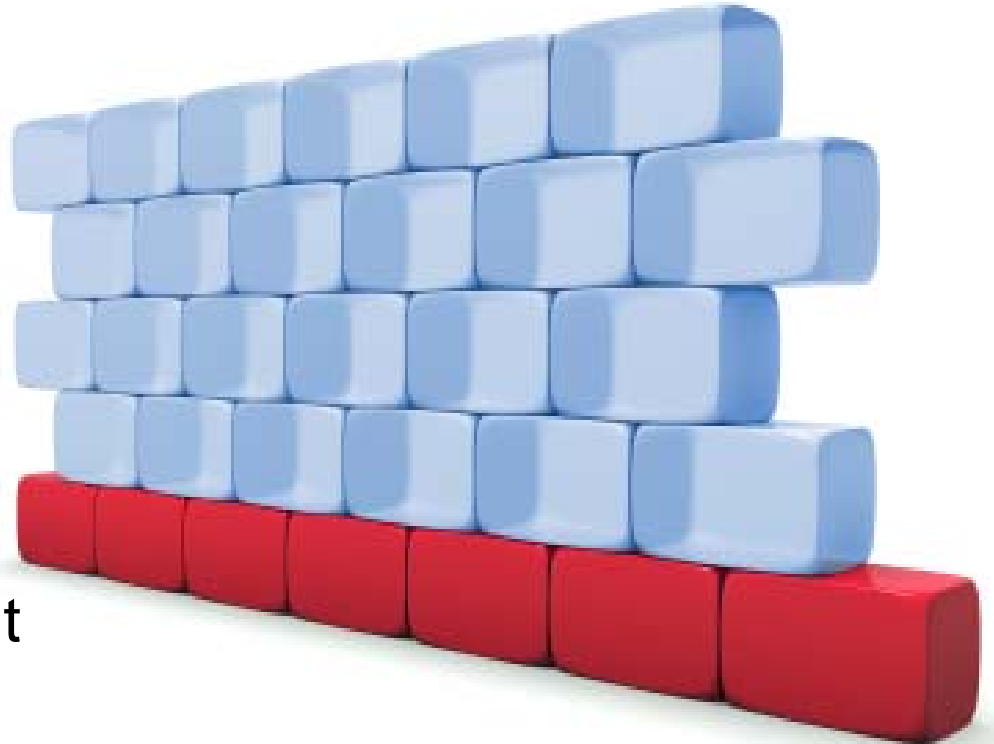
- The distribution of effects among the population

HIA and the Policy Cycle



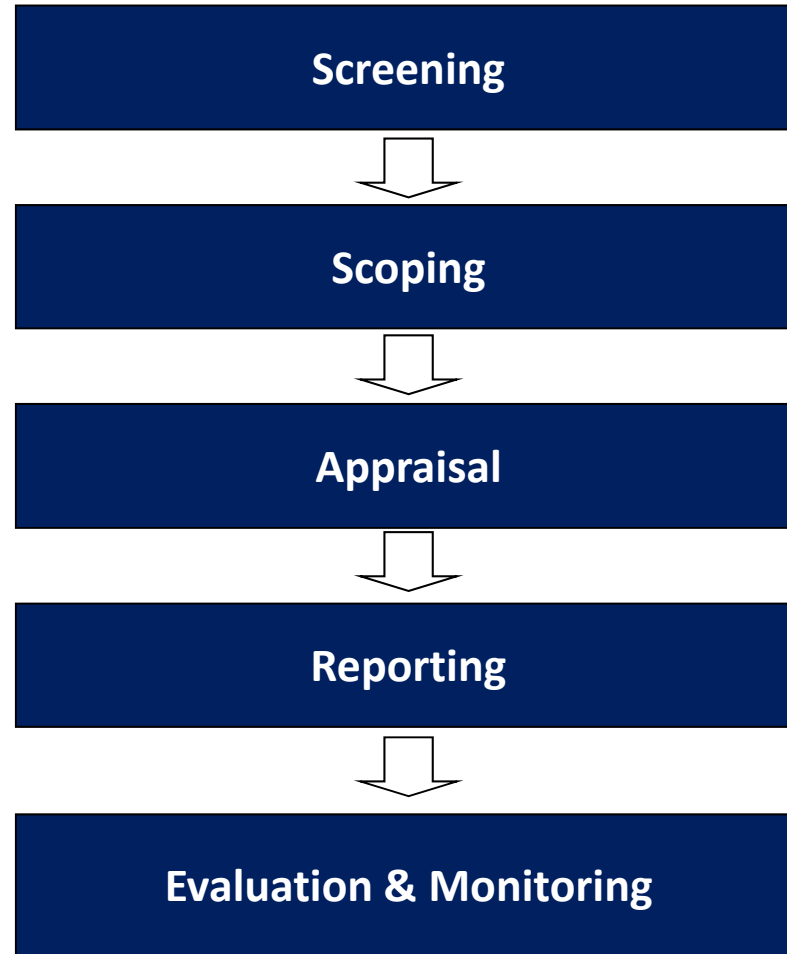
HIA core values

- Democracy
- Equity
- Ethical use of evidence
- Sustainable development






© iStockphoto.com/Mohamed Sadath

The HIA Process



Different models of practice

Main purpose	Focus of the process	Relationship to “hard” evidence
Provide expert opinion	Scientific method	
Democracy/ empowerment	Citizen participation	
Integration of health in all policies	Intersectoral Dynamic	

Related approaches

- Other types of impact analysis:
 - EIA, Social Impact Assessment (SIA), Strategic Environmental Assessment, Risk analysis...
 - Equity-focused HIA (EFHIA), Health equity impact Assessment (HEIA)
- Integrated Impact Analysis (IIA)

Related approaches (con't)

- Health in All Policies
 - Health and well-being require the engagement of all sectors
 - HIA is one way (among others) to accomplish this objective
 - HIA is undertaken to support policy decision-making (win-win approach)

See Adelaide Declaration at : www.who.int/.../hiap_statement_who_sa_final.pdf

Growing interest



Conclusion: Important points

- The **social determinants of health, equity and healthy public policies** are at the heart of HIA
- Like EIA, HIA consists of **five steps** and **rigorous methods**, and aims to strengthen the decision-making process by providing **evidence**
- HIA is **prospective** and focuses on the proposals of PPP from **outside the health sector**
- HIA is related to **other types of impact assessment** and approaches to the adoption of healthy policies, programs and projects

Questions & Discussion



Centre de collaboration nationale
sur les politiques publiques et la santé
National Collaborating Centre
for Healthy Public Policy

*Institut national
de santé publique*
Québec 



NATIONAL COLLABORATING CENTRE
FOR ABORIGINAL HEALTH
CENTRE DE COLLABORATION NATIONALE
DE LA SANTÉ AUTOCHTONE